

A-	04-25-02	FIRST PROTOTYPE RELEASE.

MATERIAL: FR-4  
 THICKNESS: 0.062" +/- 0.005"  
 PLATING: 1 OZ. COPPER  
 LAYER COUNT: 2  
 CONTROLLED IMPEDENCE: NO

FINISH:  
 HOT AIR SOLDER LEVELED (HASL) EXPOSED AREAS WITH 63/37 TIN/LEAD.  
 SOLDERMASK OVER BARE COPPER (SMOBC)  
 SOLDERMASK TYPE: DYNACHEM EPIC 200 LPI OR EQUIVALENT.  
 SOLDERMASK COLOR: GREEN  
 SILKSCREEN COLOR: WHITE INK

MICROCHIP WILL PROVIDE DRILL DATA AS A SEPARATE FILE ON A FLOPPY DISK.

USE ARTWORK SET NUMBER: Flight IHU REVISION: 2A

ANY ALTERNATIVES TO THE ABOVE SPECIFICATIONS MUST BE APPROVED BY THE ENGINEERING DEPARTMENT AT MICROCHIP.

THIS PCB TO BE MANUFACTURED TO MEET ALL ACCEPTANCE LEVELS OF A CLASS 2 PCB PER ANSI/IPC-A-600F.

ALL DIMENSIONS ARE IN INCHES.

Drill Table			
Hole Dia (inch)	Symbol	Quantity	Plated
0.010	+	398	Yes
0.038	X	15	Yes
0.042	Y	62	Yes
0.044	-	10	Yes
0.124	Z	4	Yes



Title Suitsat II IHU Flight V2 Altera		
Size B	Number Flight IHU	Rev 2A
Date Thu Nov 13, 2008	Drawn by J. JULICHER	
Filename flight ihu v2 - altera.pcb		
Sheet 1 of 1		

NOTES:  
 THIS ASSEMBLY TO BE MANUFACTURED TO MEET ALL ACCEPTANCE LEVELS OF A CLASS 2 ASSEMBLY PER ANSI/IPC-A-610B.

UNLESS OTHERWISE SPECIFIED DIMENSIONS ARE IN INCHES. TOLERANCES ARE:		
FRACTIONS	DECIMALS	ANGLES
	.XX 0.02	1 DEG
	.XXX 0.005	

A-	04-25-02	FIRST PROTOTYPE RELEASE.

MATERIAL: FR-4  
 THICKNESS: 0.062" +/- 0.005"  
 PLATING: 1 OZ. COPPER  
 LAYER COUNT: 2  
 CONTROLLED IMPEDENCE: NO

FINISH:  
 HOT AIR SOLDER LEVELLED (HASL) EXPOSED AREAS WITH 63/37 TIN/LEAD.  
 SOLDERMASK OVER BARE COPPER (SMOBC)  
 SOLDERMASK TYPE: DYNACHEM EPIC 200 LPI OR EQUIVALENT.  
 SOLDERMASK COLOR: GREEN  
 SILKSCREEN COLOR: WHITE INK

MICROCHIP WILL PROVIDE DRILL DATA AS A SEPARATE FILE ON A FLOPPY DISK.

USE ARTWORK SET NUMBER: Flight IHU REVISION: 2A

ANY ALTERNATIVES TO THE ABOVE SPECIFICATIONS MUST BE APPROVED BY THE ENGINEERING DEPARTMENT AT MICROCHIP.

THIS PCB TO BE MANUFACTURED TO MEET ALL ACCEPTANCE LEVELS OF A CLASS 2 PCB PER ANSI/IPC-A-600F.

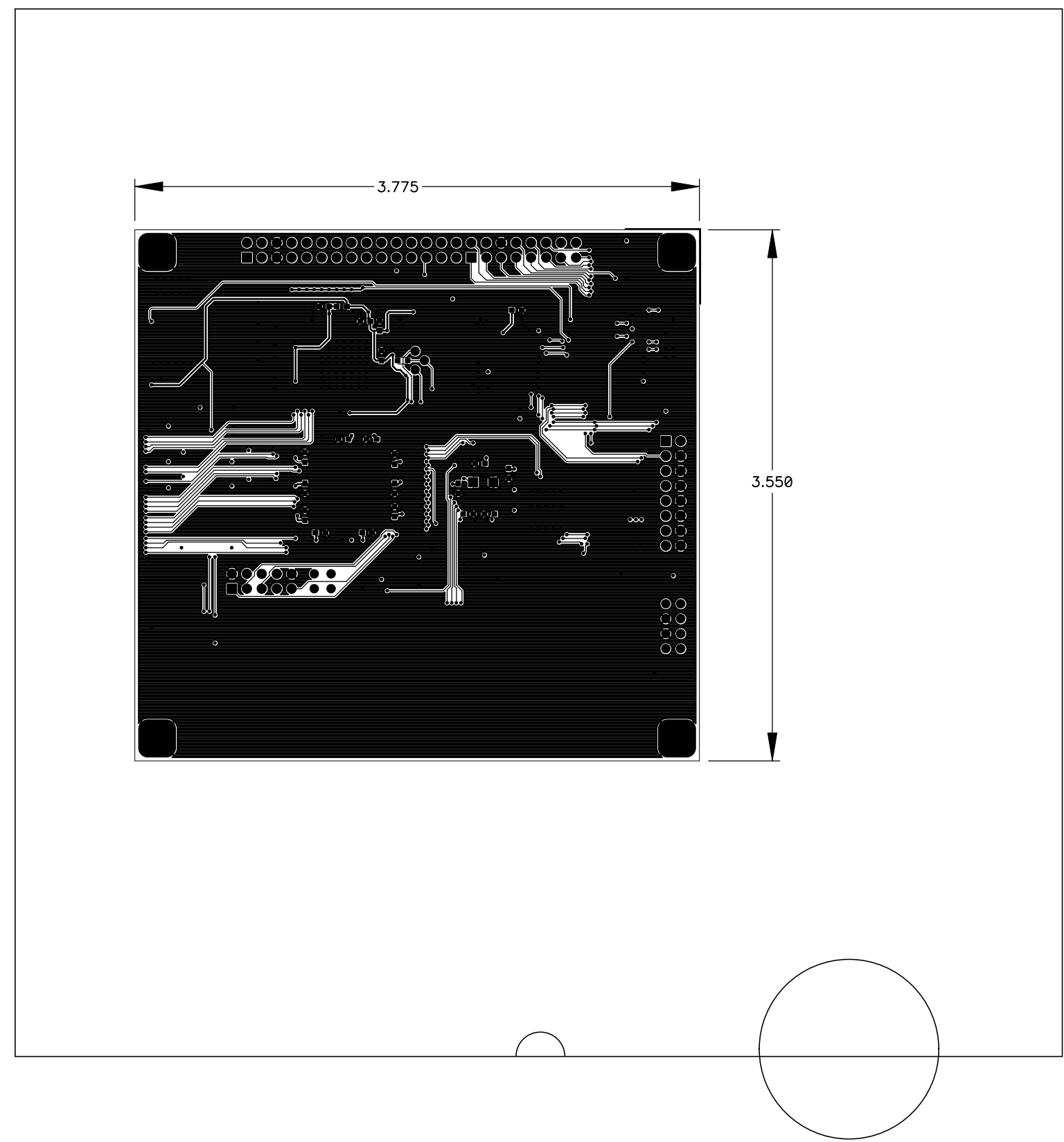
ALL DIMENSIONS ARE IN INCHES.

Drill Table			
Hole Dia (inch)	Symbol	Quantity	Plated
0.010	+	398	Yes
0.038	X	15	Yes
0.042	Y	62	Yes
0.044	⊥	10	Yes
0.124	⊗	4	Yes



Title Suitsat II IHU Flight V2 Altera		
Size B	Number Flight IHU	Rev 2A
Date Thu Nov 13, 2008		Drawn by J. JULICHER
Filename flight ihu v2 - altera.pcb		Sheet 1 of 1

UNLESS OTHERWISE SPECIFIED  
 DIMENSIONS ARE IN INCHES.  
 TOLERANCES ARE:  
 FRACTIONS DECIMALS ANGLES  
 .XX 0.02 1 DEG  
 .XXX 0.005



NOTES:  
 THIS ASSEMBLY TO BE MANUFACTURED TO MEET ALL ACCEPTANCE LEVELS OF A CLASS 2 ASSEMBLY PER ANSI/IPC-A-610B.